

LMS

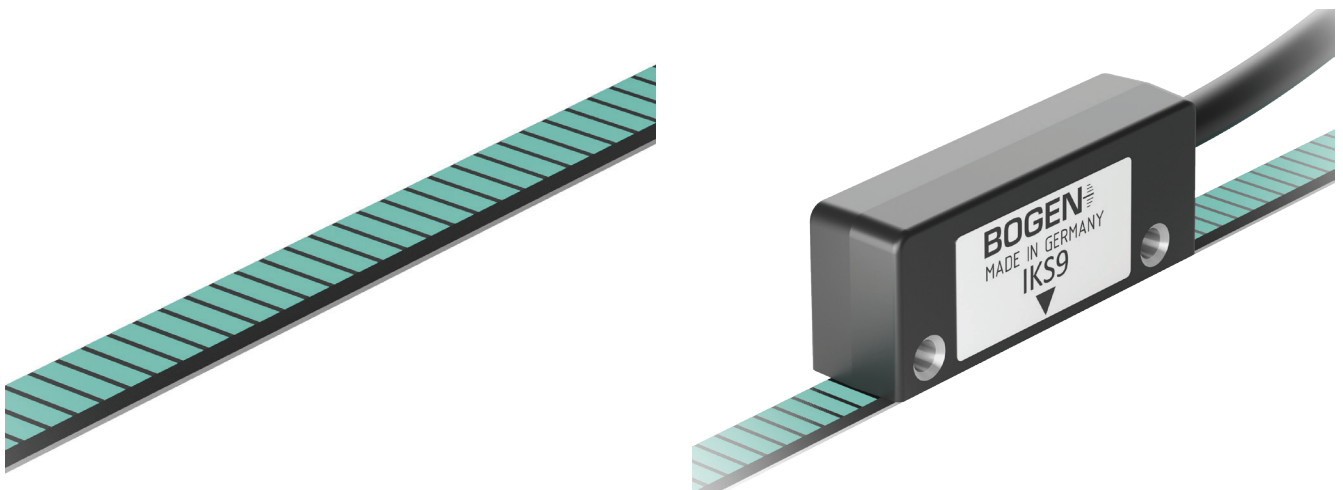
Linear Magnetic Scale

Linear Magnetic Scales (LMS) are the basis for highly accurate incremental and absolute magnetic measurement systems. They can be encoded with one or multiple tracks, with or without reference. The magnetization process, developed and patented by BOGEN, writes the magnetic poles with an exceeding accuracy referring to width and position. LMS is resistant against environmental influences like production residues, utilities, vibrations and other. The operating temperature ranges from - 20 °C up to + 100 °C. Accuracy classes up to $\pm 3 \mu\text{m}$ ensure magnetic scale solutions for a great number of customer applications, such as automation technology, robotics, mechanical and electrical engineering.

Absolute
Incremental
Measuring

Linear
Applications

Counting
Controlling



Features and Benefits

- one or multiple track magnetization
- with or without reference
- highly accurate encoded pole pairs
- different accuracy classes available
- resistant to contamination, vibrations, temperature fluctuations, humidity
- no wear from usage
- customized variants on demand

Characteristics

Linear Magnetic Scales

accuracy class	$\pm 3 \mu\text{m}$, $\pm 10 \mu\text{m}$, $\pm 20 \mu\text{m}$, $\pm 40 \mu\text{m}$, $\pm 100 \mu\text{m}$
material	magnetic tape: elastomer filled with ferrite carrier tape: stainless steel
width [mm]	5, 6, 8, 10, 12, 15, 20, 25 ± 0.2 (others on request)
thickness [mm]	0.5 to 1.66 (depending on scale setup)
pole pitch [mm]	any pole pitches in 0.01 increments (e.g. 0.5 ; 1; 1.2; 2; 2.5; 2.54; 3; 3.2; 4; 5)
magnetic flux density	pole pitch magnetic flux distance
	1 mm 20mT +10/-7 mT 0.4 mm
	2 mm 30mT +10/-10 mT 0.7 mm
	2.54 mm 30mT +10/-12 mT 0.8 mm
5 mm 30mT +10/-15 mT 1.4 mm	
operating temperature	-20°C to +100°C max.
expansion coefficient	$\sim 16 \times 10^{-6}/\text{K}$
minimum bending radius [mm]	65
length on reel	25 m, 50 m (others on request)
length in pieces	on request
end processing for pieces	multiple hole combinations and angle cuts possible (on request)

Adhesive Tape

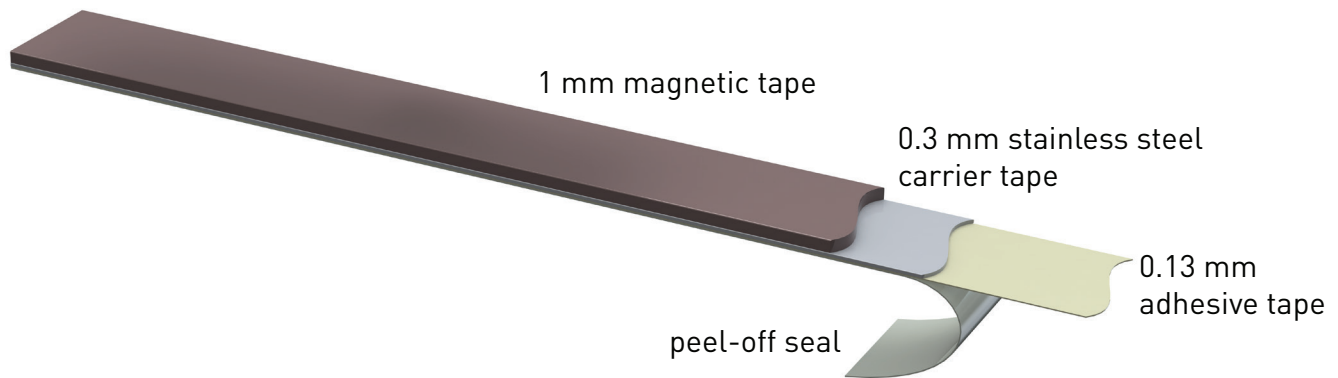
material	double-sided acrylic adhesive tape
width [mm]	4.5, 7, 9, 11, 14, 19, 24, others on request
thickness [mm]	0.13

Cover Tape (optional accessory)

material	cover tape: stainless steel, non magnetic adhesive tape: acrylic adhesive tape
width [mm]	5 ± 0.2
	8 ± 0.2
	10 ± 0.2
	12 ± 0.2
	20 ± 0.2
thickness [mm]	0.23 total thickness (0.1 mm stainless steel tape + 0.13 mm adhesive tape)
length on reel [m]	50

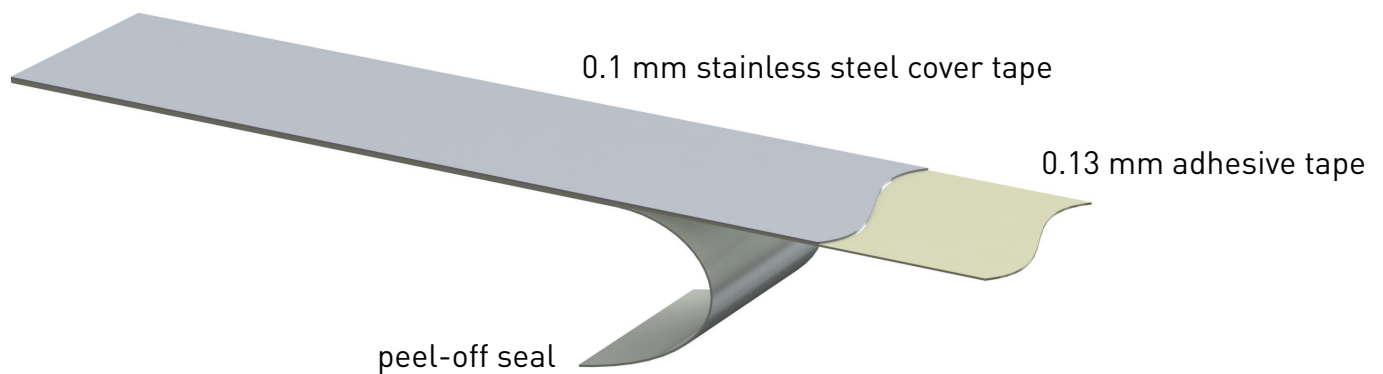
Dimensions

Magnetic Scale*

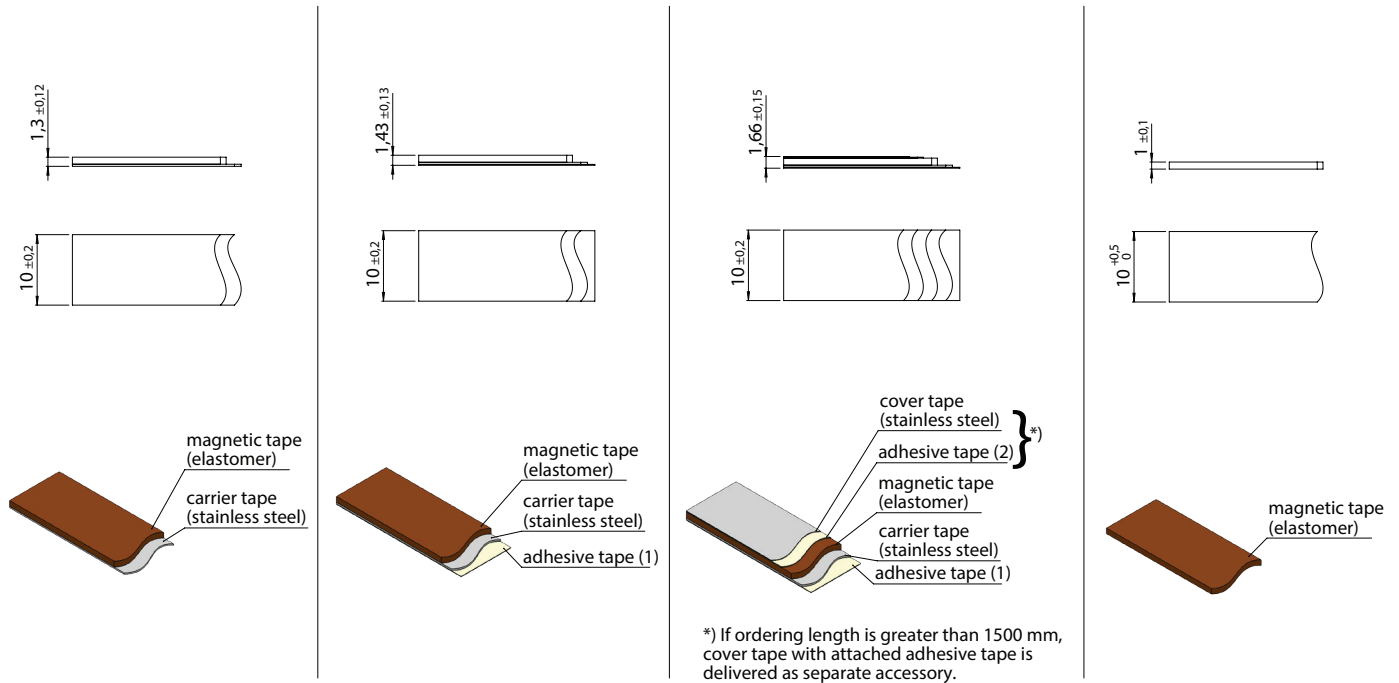


*) standard parameters, other dimensions please refer to following page

Cover Tape (optional accessory)



Scale Dimensions with Standard Layer Stackup



Scale Dimensions with Optional Layer Stackup ⁽¹⁾

For individual scale setups following layer dimensions can be used

magnetic tape	0.5 mm or 1.0 mm
carrier tape	0.1 mm or 0.3 mm
adhesive tape	0.13 mm , 0.212 mm or 0.050 mm
cover tape	0.076 mm, 0.1 mm , 0.15 mm

⁽¹⁾ standard parameters in bold

Length

Linear magnetic scales cut in pieces or supplied on reel.

Marking ⁽²⁾

The marking distance is 250 mm and builds up as follows:

accuracy class	pole pitch [µm]	year/week	reel no.	magnetic strip counter (optional)
A20.	2000.	1605.	19	marking every 250 mm
A20.	2000.	1608.	19	012 (marking one time per magnetic strip)

⁽²⁾ The magnetic strip counter indicates the number of remaining strips on the reel. The strip is marked only once per length.

Optional Accessories

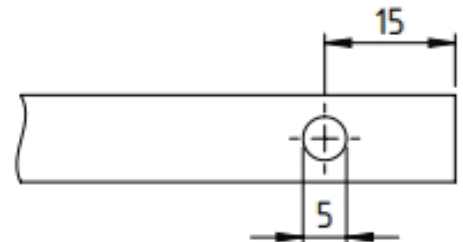
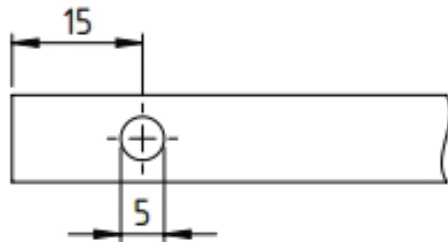
- Extruded Aluminum Profile (please contact our application engineers for the right profile for your LMS)
- Scale Applicator (for easy and precise installation of the scale)

Standard Mounting Holes

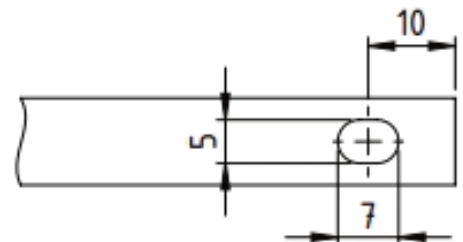
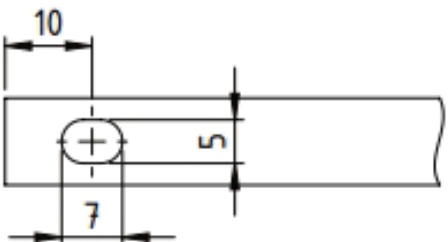
Option 1



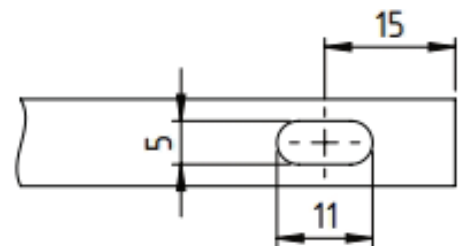
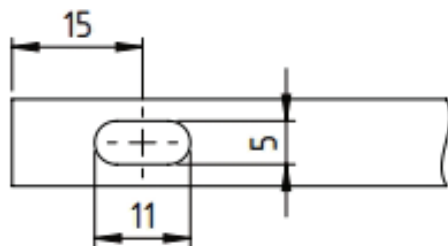
Option 2



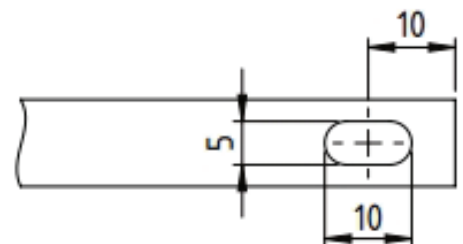
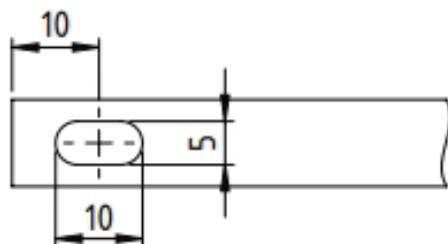
Option 3



Option 4



Option 5



Order Code

LMS - N - P - L - W - H - A - C - K - T - EB

		code	explanation ⁽¹⁾	
	N	number of tracks	one track	
			2	
			...	
	P	track parameters ⁽²⁾	I ...	one incremental track and its pole pitch ⁽³⁾
			I ... - Z	one incremental track and its pole pitch ⁽³⁾ , one reference track
			I ... - I ...	two incremental tracks and their pole pitches ⁽³⁾
	L	length	L ...	piece, length in mm ⁽⁴⁾
	W	width (mm)	W5	5 mm
			W6	6 mm
			W8	8 mm
			W8-10	8 mm Elastomer (only for P95-05 extrusion) 10 mm stainless steel carrier tape (only for P95-05 extrusion)
			W10	10 mm
			W12	12 mm
			W15	15 mm
			W20	20 mm
			W25	25 mm
	H	scale height (mm)		1 mm magnetic tape, 0.3 mm carrier tape
			H1-0.1	1 mm magnetic tape, 0.1 mm carrier tape
			H0.5-0.3	0.5 mm magnetic tape, 0.3 mm carrier tape
			H0.5-0.1	0.5 mm magnetic tape, 0.1 mm carrier tape
A	accuracy class	A03	$\pm 3 \mu\text{m/m}$ (only delivered up to piece length 2300 mm)	
		A10	$\pm 10 \mu\text{m/m}$ (only delivered up to piece length 2300 mm)	
		A20	$\pm 20 \mu\text{m/m}$	
		A40	$\pm 40 \mu\text{m/m}$	
		A100	$\pm 100 \mu\text{m/m}$	
C	cover tape		without cover tape	
		C	equipped with cover tape (only delivered up to piece length 1500 mm)	
K	adhesive tape		without adhesive tape	
		K	equipped with adhesive tape	
T	text imprint		with BOGEN text imprint	
		T0	without text imprint	
		T2	with customer specific text imprint (on request)	
EB	mounting holes ⁽⁵⁾		without mounting holes	
		1	please see drawings on the previous page	
		2		
		3		
		4		
		5		

⁽¹⁾ standard parameters are bold

⁽²⁾ for absolute track and other options than listed please contact our sales team

⁽³⁾ standard pole pitches: 0.5 mm, 1 mm, 2 mm, 2.54 mm, 5 mm

⁽⁴⁾ length of nonius scale: measuring length + 5 mm non-magnetized scale at each end; measuring length = number of poles x pole pitch; all other scales: length = measuring length

⁽⁵⁾ for other options than listed please contact our application engineers

Ordering Example

LMS2-I1-Z-L2200-W10-A3-K-EB2 linear magnetic scale, 2 tracks, one incremental track with pole pitch 1 mm, one reference track, length 2.200 mm, width 10 mm, width of scale encoded completely, height magnetic tape 1 mm and height carrier tape 0.3 mm, accuracy $\pm 3 \mu\text{m/m}$, without cover tape, with adhesive tape, with standard text imprint, mounting holes option 2

LMS-I10-L48000-W8-A100-K-T2 linear magnetic scale, one track, incremental track with 10 mm pole pitch, length 48,000 mm, width 8 mm, width of scale encoded completely, height magnetic tape 1 mm and height carrier tape 0.3 mm, accuracy $\pm 100 \mu\text{m/m}$, without cover tape, with adhesive tape, customer specific text imprint

Customization

Linear scales can be customized beyond these listed settings with different pole patterns including irregular patterns, different tracks and other options. Please contact BOGEN's application engineers with your requests.